

Royal Holloway, University of London

Car Park 14 - New Multi-Storey Carpark

Project Description

In parallel with the new library, and to help offset the loss of car parking spaces created by it, the university delivered the expansion of car park 14 (into what we see today) via a full planning application (Ref: RU.15/0368, granted on the 13th May 2015). By expanding car park 14 from 50 to 172 spaces, it was possible to retain car parking numbers across the campus.

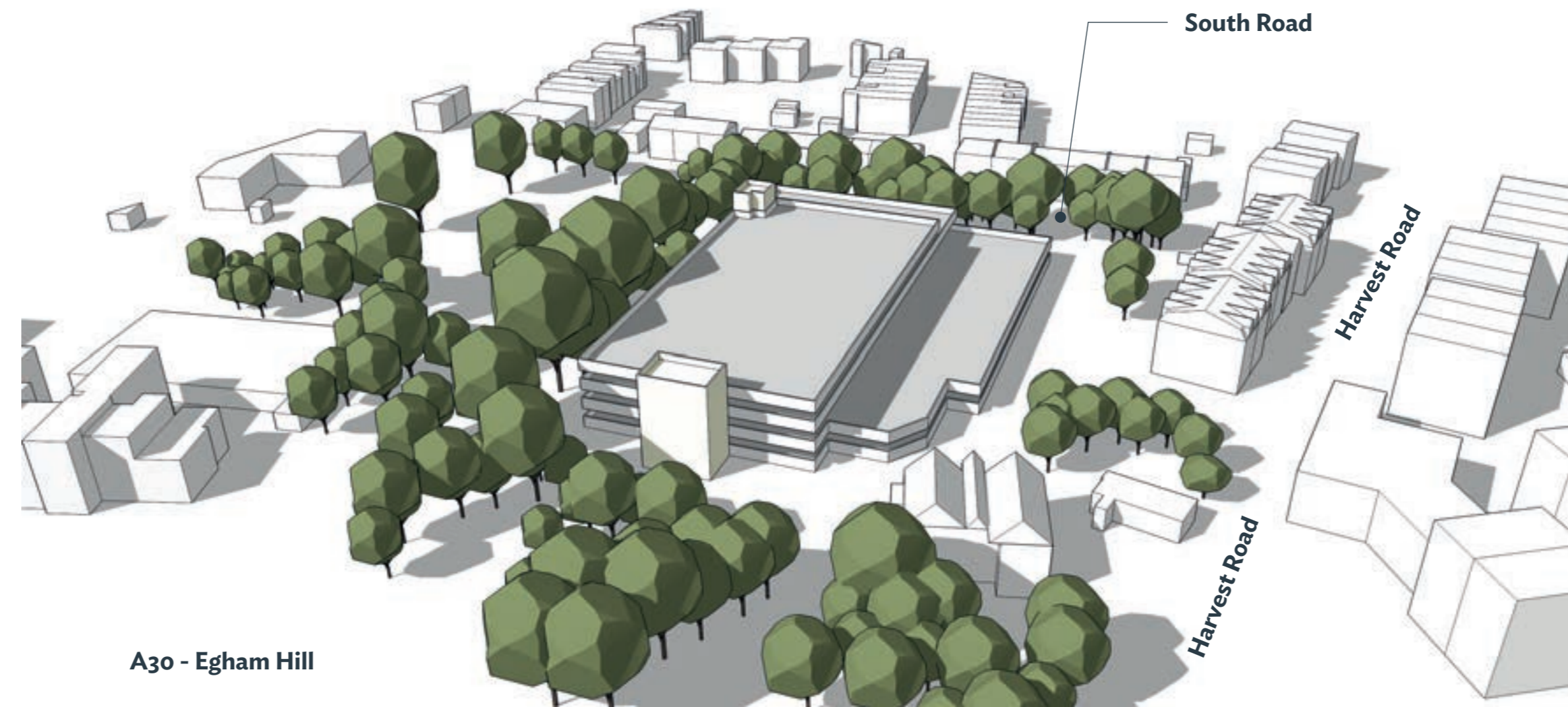
The further expansion of car park 14, in the form of a multi-storey car park, is proposed to add resilience to the overall parking provision across the campus. An initial feasibility design has been produced to establish the capacity of parking on the site suggests that the new multi-storey car park could deliver 468 spaces, a net increase of 296 above existing. The height of the car park will be ground + 2/3 levels of decked car parking.

This is offset by a similar reduction in the number of spaces against a future (target) Masterplan provision by virtue of the Handa Noh Theatre relocation, the Music, Media Arts and Centre for Digital Creativity Building and the reduction in size of the multi-storey car park at Piggery Gate. Unless re-provided, this would result in a loss of c325 spaces. The balance of current parking spaces will therefore be reduced by circa 29 spaces if the decked parking is delivered.

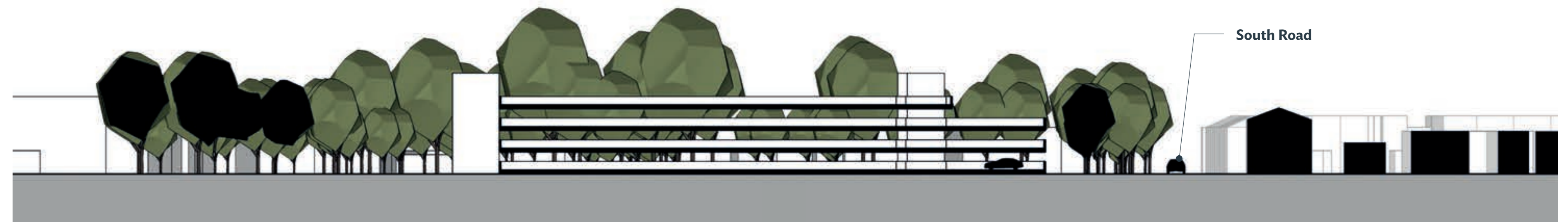
Key facts on the proposed MSCP:

- Overall Parking Bays = 468
- Disabled Parking Bays = 9
- Electric Charging Provision = 47
- Bay Size = 2.5m x 4.8m
- Aisle Width = 6m
- Floor to Floor Height = 2.95m

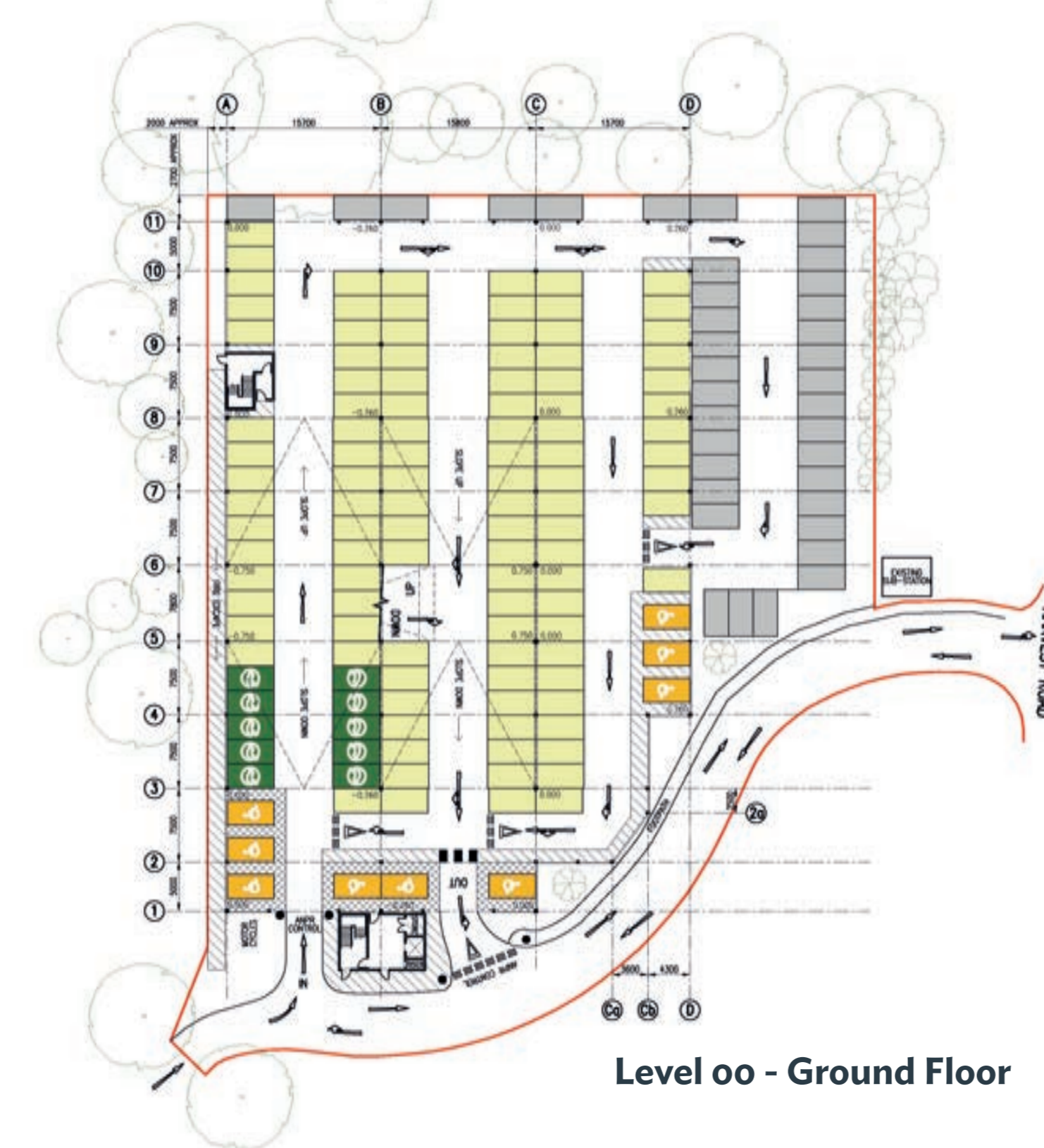
It is anticipated that the planning application will be submitted in January 2020.



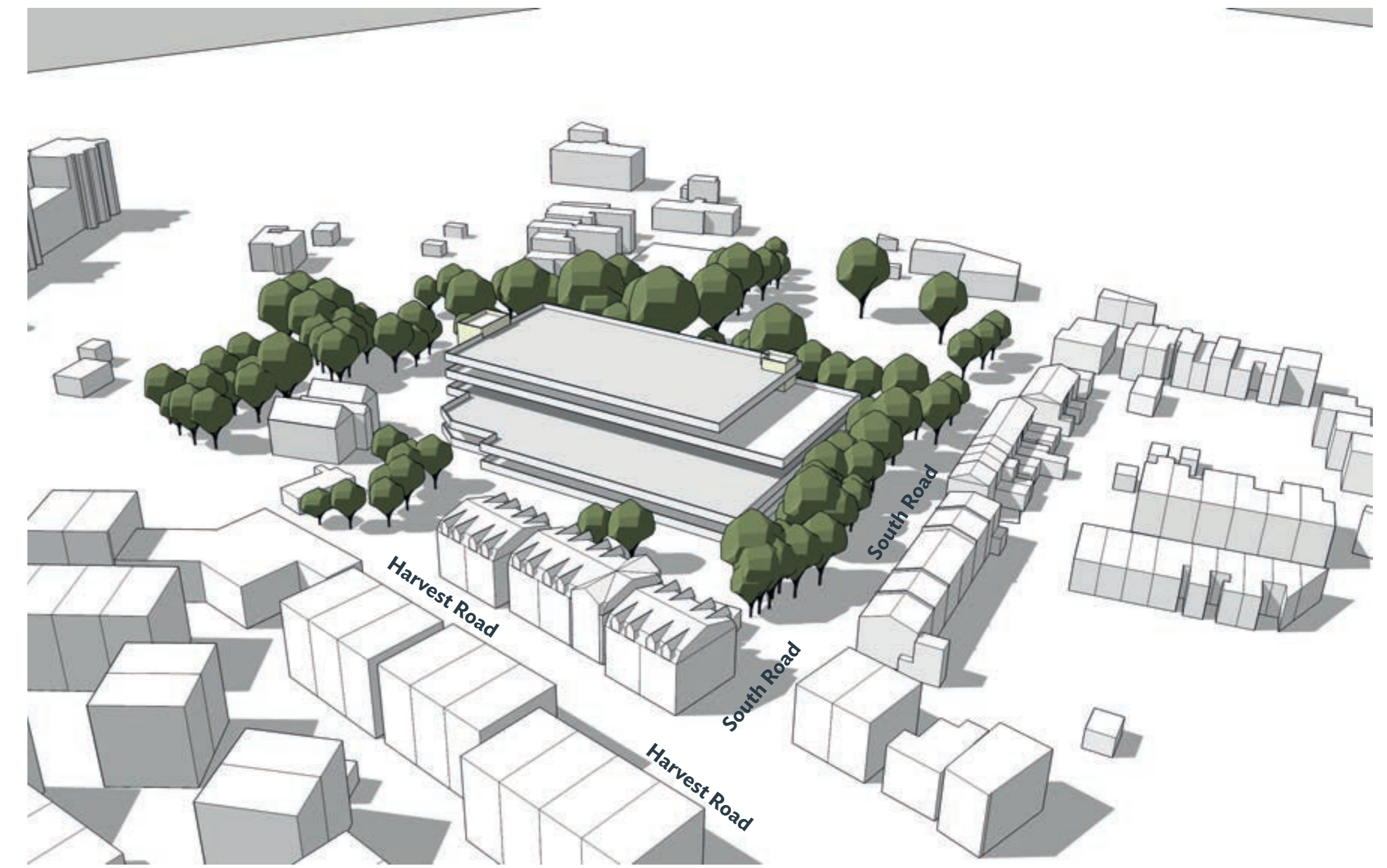
Context Massing Model from South



Long Section AA



Level 00 - Ground Floor



Context Massing Model from East



View of Surrounding Properties



Existing Car Park



Existing Car Park Overview and Surrounding Trees